



*the*innocent<sup>®</sup>  
HOUND

**DOG FRIENDLY NEIGHBOURHOOD GUIDE**



---

## WELCOME TO CAMDEN

---

We are delighted to welcome you and your four-legged family member to STAY Camden. We hope you are settling into your new home-away-from-home, and want you to know that our friendly team are here to help make your stay absolutely pawfect.

Together, with our friends at Innocent Hound, we have put together a list of the exciting things you can do to in your new neighbourhood together, as well as some useful information that might be useful during your visit.

**Follow us on Instagram and remember to tag us  
in all your adventures.**

 @STAY \_ WORLDWIDE  @THEINNOCENTHOUND







## DOG FRIENDLY RESTAURANTS & CAFÉS

### AMERICANO | NEXT DOOR TO STAY CAMDEN

3 Water Lane, Hawley Wharf

Upmarket Italian café serving artisanal coffee, an all-day Italian food menu and Aperitivo by night. Perfect for hanging out canal-side with your best friend. All dogs are allowed to enjoy the terrace area, and up to medium sized pooches inside.

### MILDRED'S CAMDEN | 0.2 MILES | 4-MINUTE WALK

9 Jamestown Road, NW1 7BW

100% plant based and pup friendly eatery, serving colourful fresh plates using organic ingredients, sourced from small businesses.

### PERON NO4 | 0.2 MILES | 4-MINUTE WALK

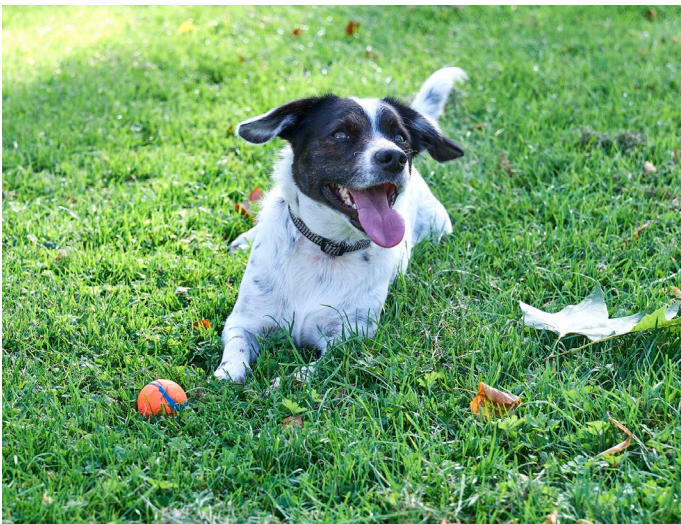
10 Jamestown Road, NW1 7BY

Local Mediterranean restaurant serving fresh dishes, inspired by the cooking styles and flavours around the Mediterranean Sea. Including a weekend brunch menu and extensive cocktail list.

### THE HUB CAFÉ | 1.2 MILES | 26-MINUTE WALK

Regent's Park, NW1

Perfectly placed for a post-walk refreshment, offering 360 degree views of Regent's Park, serving a selection of drinks and light bites. For the warmer days, you and your pup can enjoy sitting out on the terrace.





### **BREWDOG CAMDEN** | 0.3 MILES | 7-MINUTE WALK

113 Bayham Street, NW1 0AG

Serving up an array of international craft brews across two floors and some tasty grub to match. You can even book a Pawty to celebrate your dog's birthday, complete with party hats, a card, a special dog ice-cream Sunday.

### **THE FARRIER** | 0.4 MILES | 8-MINUTE WALK

Camden Stables Market, North Yard, NW1 8AH

Local gastropub, set in a Grade II listed stables, offering modern rustic dining and a huge selection of artisan and natural wines and cocktails.

### **THE COLONEL FAWCETT** | 0.4 MILES | 8-MINUTE WALK

1 Randolph St, London NW1 0SS

For somewhere a little further from the Camden Town crowds, The Colonel Fawcett serves up a delicious Sunday Roast and plays host to regular popups, comedy nights and weekly pub quiz!







## HAWLEY WHARF

1 Dockray Place, NW1 8QH

Restored canal-side destination with retail leisure and food traders extending from Camden Market to Kentish Town Road. Discover two-floors of food halls within Camden Market's latest upscale development, right on STAY Camden's doorstep.

## CAMDEN MARKET | 0.2 MILES | 3-MINUTE WALK

54-56 Camden Lock Place, NW1 8AF

World-famous market, next to Camden Lock, with over 1,000 unique shops, stalls, bars and cafes, open seven days a week.

## BUCK STREET MARKET | 0.2 MILES | 3-MINUTE WALK

192, 198 Camden High Street, NW1 8QP

Officially the UK's first dedicated market for the conscious consumer, featuring an array of sustainable food brands and ethical retail traders, set within recycled shipping containers.

## PRIMROSE HILL MARKET | 1.2 MILES | 25-MINUTE WALK

Elsworthy Road, NW3 3DS

Each Saturday, this local Farmers' market serves up fresh produce, providing a platform for independent traders from the local community.





### **CAMDEN SQUARE GARDENS** | 0.6 MILES | 13-MINUTE WALK

12 Camden Square, NW1 9UY

A traditional Victorian square tree-lined garden, with benches and a designated large space for your four-legged friend to roam free.

### **PRIMROSE HILL** | 0.6 MILES | 13-MINUTE WALK

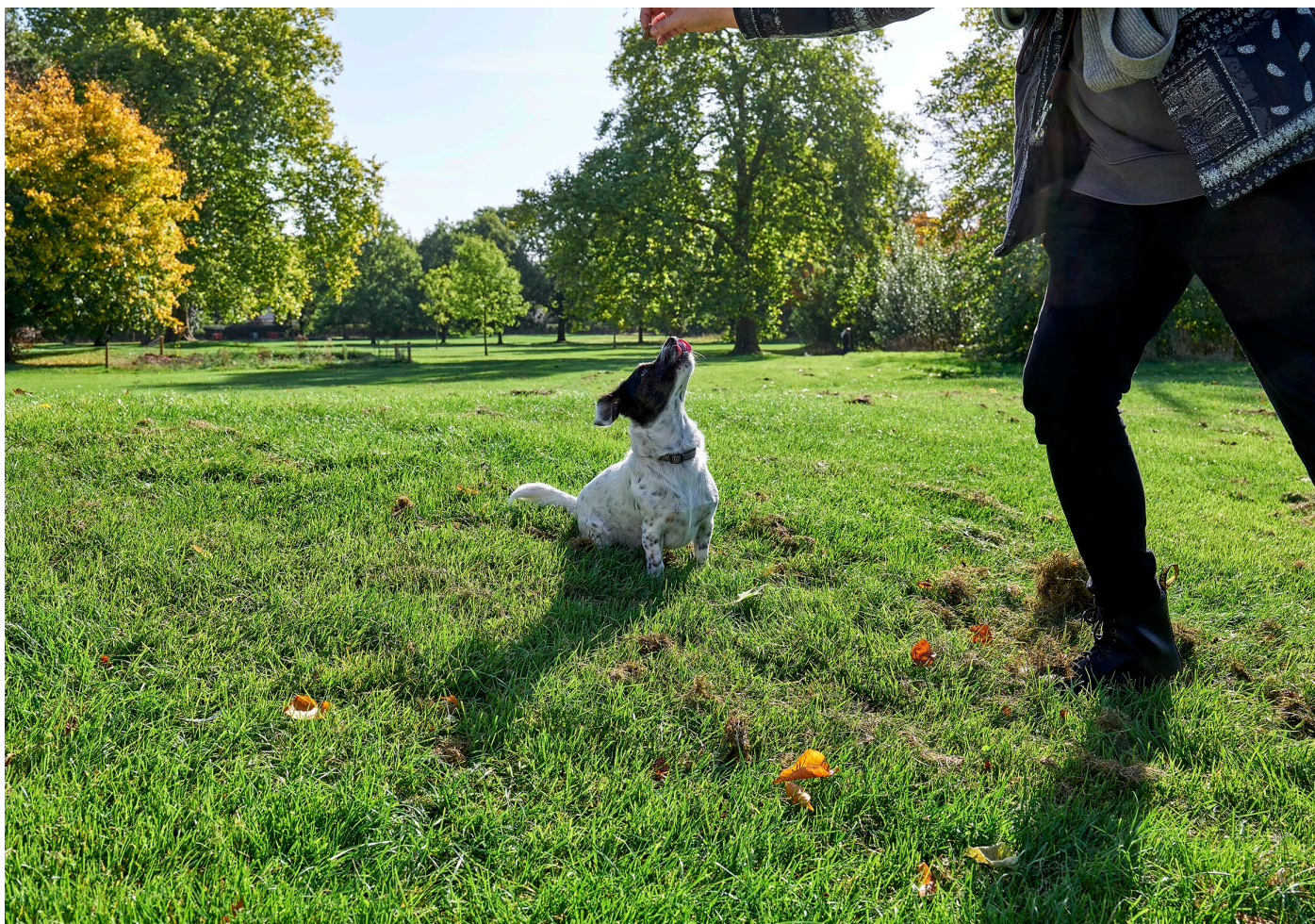
Primrose Hill Road, NW1 4NR

A grassy hill offering stunning views across London.

### **REGENT'S PARK** | 0.7 MILES | 15-MINUTE WALK

NW1

One of the eight Royal Parks in London, offering large open spaces, tree-lined pathways and a selection of dog friendly cafes and eateries.







### EVEREST PET SUPPLY | 0.2 MILES | 4-MINUTE WALK

Ground Floor, Buck Street Market, 180-188 Camden High Street, NW1 8QP

Original Nepalese Yak Milk Chews, wool bedding, clothing and eco toys. The brand strives to give back, offering fair pay, environmentally aware & meaningful products.

### PETS AT HOME | 0.4 MILES | 8-MINUTE WALK

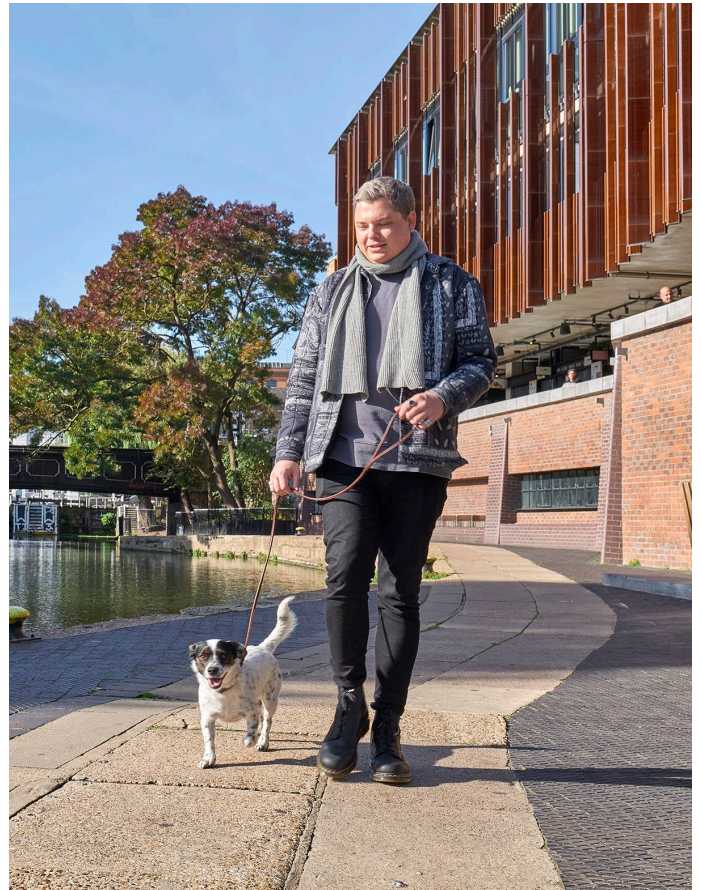
85 Camden Road, NW1 9EX

Your local go to for pet supplies, selling pet products, food, toys bedding, medication and more. They also offer workshops, grooming as well as advice for a range of topics and animals.

### PET PAVILION | 0.9 MILES | 18-MINUTE WALK

132 Regent's Park Road, NW1 8XL

Premium pet boutique offering carefully curated foods, treats, toys and accessories, as well as highly trained groomers to pamper your dogs and cats in a luxurious salon environment.







The welcome treats in your apartment were lovingly made by our friends at **The Innocent Hound**, a family run pet food manufacturer based in Wetherby. They produce award-winning, air-dried food and treats that are handcrafted using high quality, responsibly sourced British meats.

## WHAT IS AIR-DRIED DOG AND CAT FOOD?

Air-drying is a simple and gentle method of removing moisture from the ingredients, whilst protecting the flavour and nutrients. It requires very little processing and no high temperatures, resulting in a delicious and nutritious food.

The Innocent Hound uses freshly prepared raw meat, sourced from British farms with some of the highest animal welfare standards in the world, and healthy fruit and vegetables. The ingredients are carefully combined and handcrafted into food and treats. All recipes are grain free, hypoallergenic and many contain only single proteins, making them ideal for pets with intolerances and allergies.

As the business was inspired by their rescue lurcher, Bongo, the company is committed to supporting dog rescue charities. Their zero-food waste policy means that food is regularly donated to rescues across the UK – in the last year that has been over 1,000kg of tail-wagging food!

